



2024 Year in Review

H.O.P.E.
Gardens
helping other people eat





We believe that a small **seed**
in the hands of a **child** can
transform a **community**

H.O.P.E.
Gardens
helping other people eat



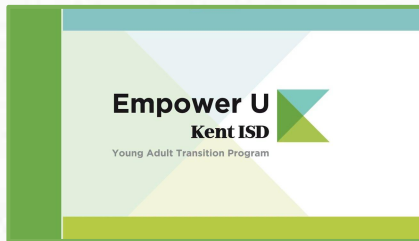


We focus on establishing educational gardens at schools, providing hands-on learning experiences for students from kindergarten through middle school.



We are growing with students in

14 nature-based
school gardens
in West Michigan

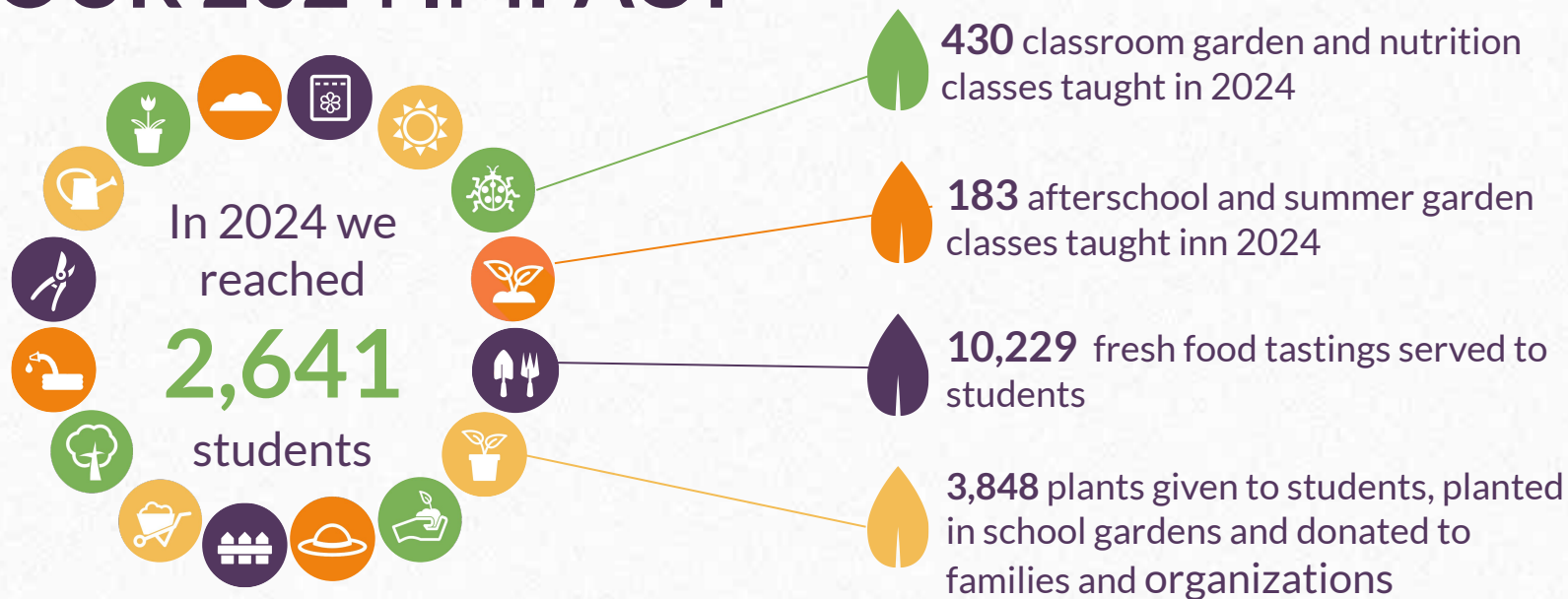


GODWIN HEIGHTS
MIDDLE SCHOOL



Grandville
Public
Schools

OUR 2024 IMPACT



AFTER A YEAR OF GARDEN AND NUTRITION EDUCATION, A 2024 SURVEY OF PARENTS REVEALED:

- **88%** of parents believe it is very important for their child to learn about healthy eating and/or physical activity
- **70%** of parents report their children eating more fruit
- **66%** of parents report their children eating more vegetables
- **94%** of parents report their children are more physically active



In the
2024-2025
school year, we
will provide
monthly garden
and nutrition
classes in
58 classrooms.

H.O.P.E. 
Gardens
helping other people eat





We bring monthly after-school garden and nutrition classes to 6 elementary and middle schools.





In 2024, with support from the USDA Farm to School grant, HOPE Gardens launched a bi-weekly gardening program for young adult students at Empower U, a school specializing in education for students with IEPs.

H.O.P.E.
Gardens
helping other people eat



Each summer, we partner with **Fit Kids** at Marquette Park in Wyoming, where families come together for weekly activities centered on health, wellness, and growing nutritious food.

H.O.P.E.
Gardens 



South Elementary in Grandville was one of our first school gardens.



Their Parent Club continues to fund garden education classes for their students.



**Grandville
Public
Schools**

A new community garden at Family Network of Wyoming



PLANT 1
LANDSCAPE SUPPLY



**FAMILY
NETWORK
OF WYOMING**

WELLER
AUTO PARTS

H.O.P.E.
Gardens
helping other people eat

Express
EMPLOYMENT PROFESSIONALS

New Fences at Godfrey-Lee ECC and Elementary





**MICHIGAN
FITNESS
FOUNDATION**



New fence and garden expansion at West Elementary

H.O.P.E. Gardens
helping other people eat

New fence and garden expansion at Gladiola



H.O.P.E.
Gardens
helping other people eat

**MICHIGAN
FITNESS
FOUNDATION**



Expanding Farm to School programs across Kent County



Kent ISD



Kent County
Food Policy Council

A Committee of ENTFF

**MICHIGAN
FITNESS
FOUNDATION**

H.O.P.E.
Gardens
helping other people eat



We're thankful
for all of our
volunteers!
Whether you're
a regular or
lend a hand
when needed.
Your support
means so much
to us!

H.O.P.E.
Gardens 



OUR STAFF



Julie Brunson
Executive Director



Debi Whelan
Program Administrator



Holly Smith
Lead Educator



Andrea Shingledecker
Educator



Sarah Samosiuk
Educator/Garden Manager



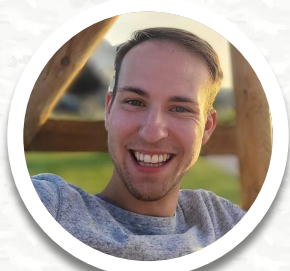
Kathy Bego
Garden Educator



Josh Usadel
Garden Educator



Angie Bruder
Garden Educator



Mitch Dahlstrom
Garden Educator



Angela Violet
Accounting/Human
Resources



April Williamson
Greenhouse Manager

OUR BOARD of DIRECTORS



Sarah Chatterly
President



Ja'Keem Badger
Vice-President



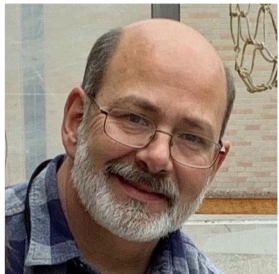
Sandy Bergh
Treasurer



Regan Gibson
Secretary



Julie Brunson
Executive Director



Rich Brunson
Board Member Emeritus



Renee Terbeek



Kerri Zeiler



Amiya Haywood



Lily Williams

2024 PRESS RELEASES



[Click to listen](#) as Executive Director Julie Brunson shares how H.O.P.E. Gardens inspires kids and families to grow their own food.



Growing Hope: H.O.P.E. Gardens provides essential food and resources for Wyoming families - WKTV Journal



[Click to read](#): Farm to School Grant Program Awarded Project Descriptions FY 2024



Youth Mentor Gardens grow food, family, and community in Grand Rapids area.



[Click to read](#) School News Network article: Growing Skills and Knowledge by Cultivating Produce.



Our partners support school and community gardening and make our work possible



The Garden to Table Seed Company



hopegardensgr.org

H.O.P.E.
Gardens
helping other people eat

A stylized green sprout icon with a thin stem and three leaves of varying sizes, positioned to the right of the main text.