



# 2024 Year in Review

H.O.P.E.  
*Gardens*  
helping other people eat





We believe that a small seed  
in the hands of a child can  
transform a community

H.O.P.E.  
*Gardens*  
helping other people eat





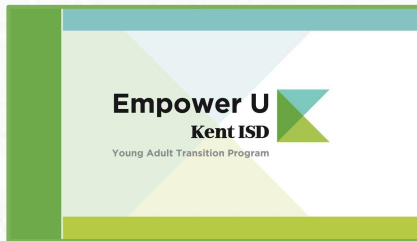


We focus on establishing educational gardens at schools, providing hands-on learning experiences for students from kindergarten through middle school.





# We are growing with students in **14** nature-based school gardens in West Michigan



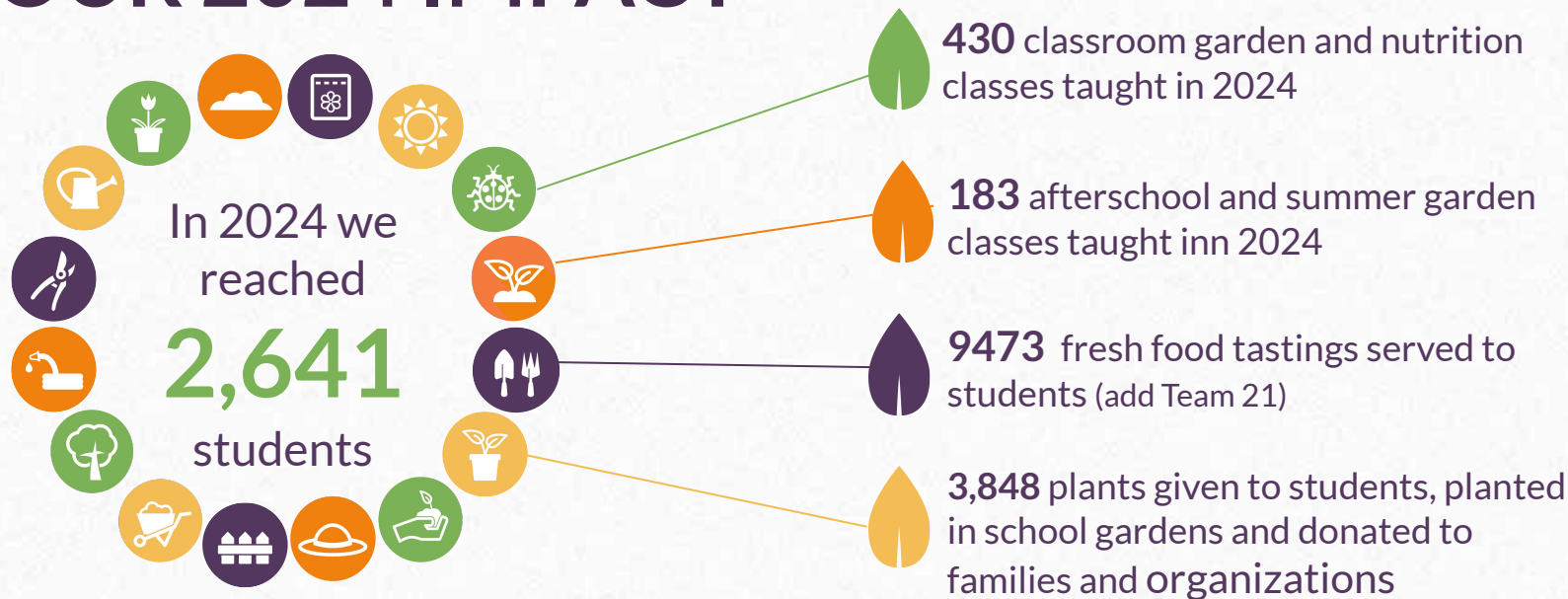
GODWIN HEIGHTS  
MIDDLE SCHOOL



Grandville  
Public  
Schools



# OUR 2024 IMPACT



## AFTER A YEAR OF GARDEN AND NUTRITION EDUCATION, A 2024 SURVEY OF PARENTS REVEALED:

- **88%** of parents believe it is very important for their child to learn about healthy eating and/or physical activity
- **70%** of parents report their children eating more fruit
- **66%** of parents report their children eating more vegetables
- **94%** of parents report their children are more physically active





In the  
2024-2025  
school year, we  
will provide  
monthly garden  
and nutrition  
classes in  
58 classrooms.

H.O.P.E.  
*Gardens*  
helping other people eat







We bring monthly after-school garden and nutrition classes to 6 elementary and middle schools.







In 2024, with support from the USDA Farm to School grant, HOPE Gardens launched a bi-weekly gardening program for young adult students at Empower U, a school specializing in education for students with IEPs.

H.O.P.E.  
*Gardens*  
helping other people eat





Each summer, we  
partner with

**Fit Kids**

at Marquette  
Park in Wyoming,  
where families  
come together for  
weekly activities  
centered on  
health, wellness,  
and growing  
nutritious food.

H.O.P.E.  
*Gardens*



South Elementary in Grandville was one of our first school gardens. Their Parent Club continues to fund garden education classes for their students.



**Grandville  
Public  
Schools**



# A new community garden at Family Network of Wyoming



**PLANT 1**  
LANDSCAPE SUPPLY



**FAMILY  
NETWORK**  
OF WYOMING

**WELLER**  
AUTO PARTS

H.O.P.E.  
*Gardens*  
helping other people eat

**Express**  
EMPLOYMENT PROFESSIONALS



# New Fences at Godfrey-Lee ECC and Elementary



**Kent ISD**



**H.O.P.E. Gardens**  
helping other people eat



MICHIGAN  
FITNESS  
FOUNDATION



New fence and garden expansion at West Elementary

H.O.P.E.  
Gardens  
helping other people eat



# New fence and garden expansion at Gladiola



H.O.P.E.  
*Gardens*  
helping other people eat

**MICHIGAN  
FITNESS  
FOUNDATION**





# Expanding Farm to School programs across Kent County



**Kent ISD**



Kent County  
**Food Policy Council**

A Committee of ENTIF

**MICHIGAN**  
**FITNESS**  
**FOUNDATION**

H.O.P.E.  
*Gardens*  
helping other people eat





We're thankful  
for all of our  
volunteers!  
Whether you're  
a regular or  
lend a hand  
when needed.  
Your support  
means so much  
to us!

H.O.P.E.  
*Gardens* 





# OUR STAFF



Julie Brunson  
Executive Director



Debi Whelan  
Program Administrator



Holly Smith  
Lead Educator



Andrea Shingledecker  
Educator



Sarah Samosiuk  
Educator/Garden Manager



Kathy Bego  
Garden Educator



Josh Usadel  
Garden Educator



Angie Bruder  
Garden Educator



Mitch Dahlstrom  
Garden Educator



Angela Violet  
Accounting/Human  
Resources



April Williamson  
Greenhouse Manager



# OUR BOARD of DIRECTORS



Sarah Chatterly  
President



Ja'Keem Badger  
Vice-President



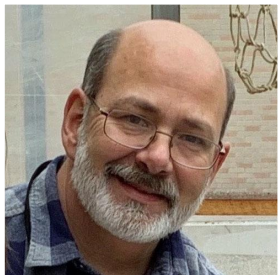
Sandy Bergh  
Treasurer



Regan Gibson  
Secretary



Julie Brunson  
Executive Director



Rich Brunson  
Board Member Emeritus



Renee Terbeek



Kerri Zeiler



Amiya Haywood



Lily Williams





Our **partners** support school  
and community gardening  
and make our work possible



The Garden to Table Seed Company







[hopegardensgr.org](http://hopegardensgr.org)

H.O.P.E.  
*Gardens*  
helping other people eat

A green sprout with a thin stem and three leaves, positioned to the right of the text "H.O.P.E. Gardens".